

6. Celler og transportprocesser

Gør rede for hvordan en eukaryot celle er opbygget og forklar udvalgte organellers funktion.

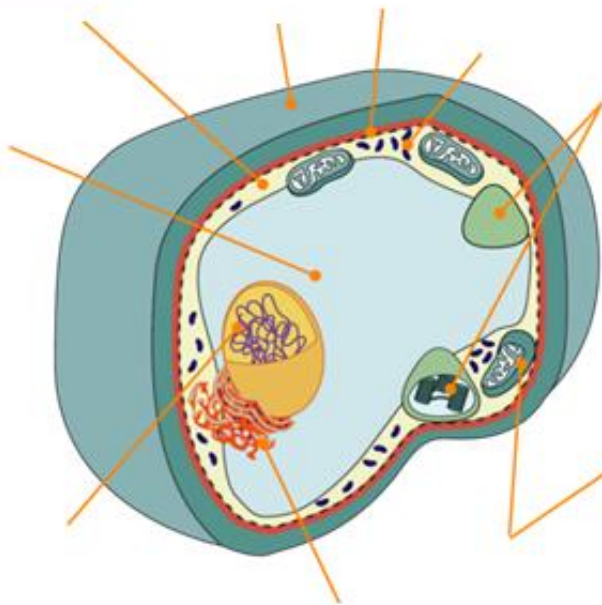
Forklar hvordan cellemembranen er opbygget samt hvad det betyder at membranen er *semipermeabel*.

Diskuter forskellige transportprocesser der foregår over cellemembranen – inddrag dit forsøg om osmose.

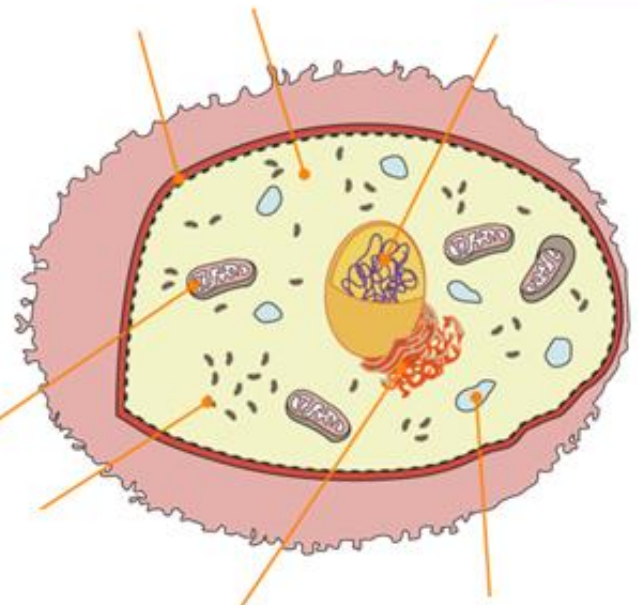
Det vedlagte materiale bør inddrages i besvarelsen.

Bilag 1 (ukendt)

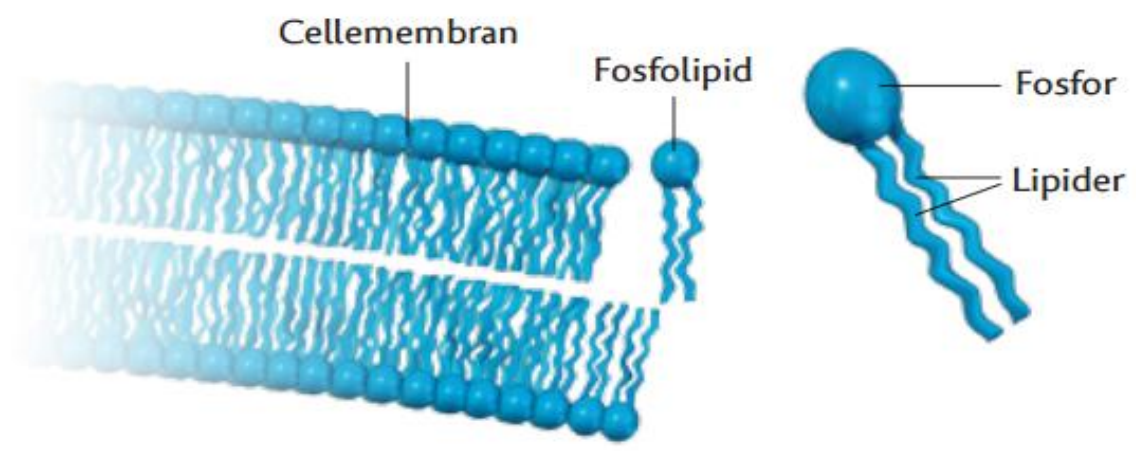
Plantecelle



Dyrecelle

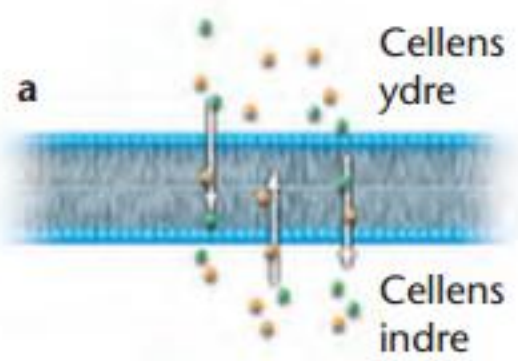


Bilag 2 (kendt)

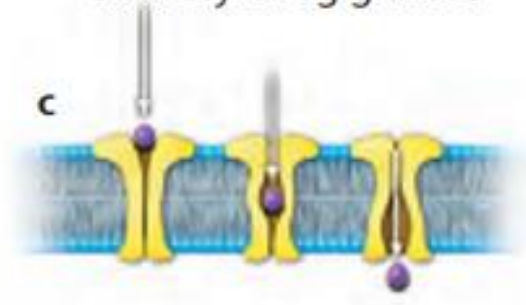


Bilag 3 (ukendt)

Diffusion af O₂ og CO₂



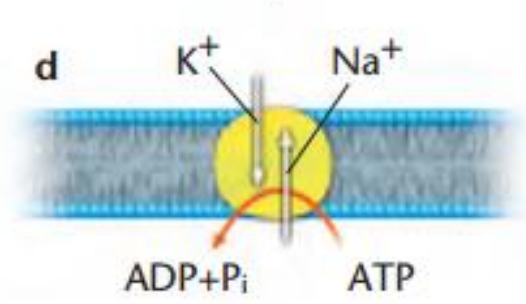
Faciliteret diffusion af aminosyrer og glukose



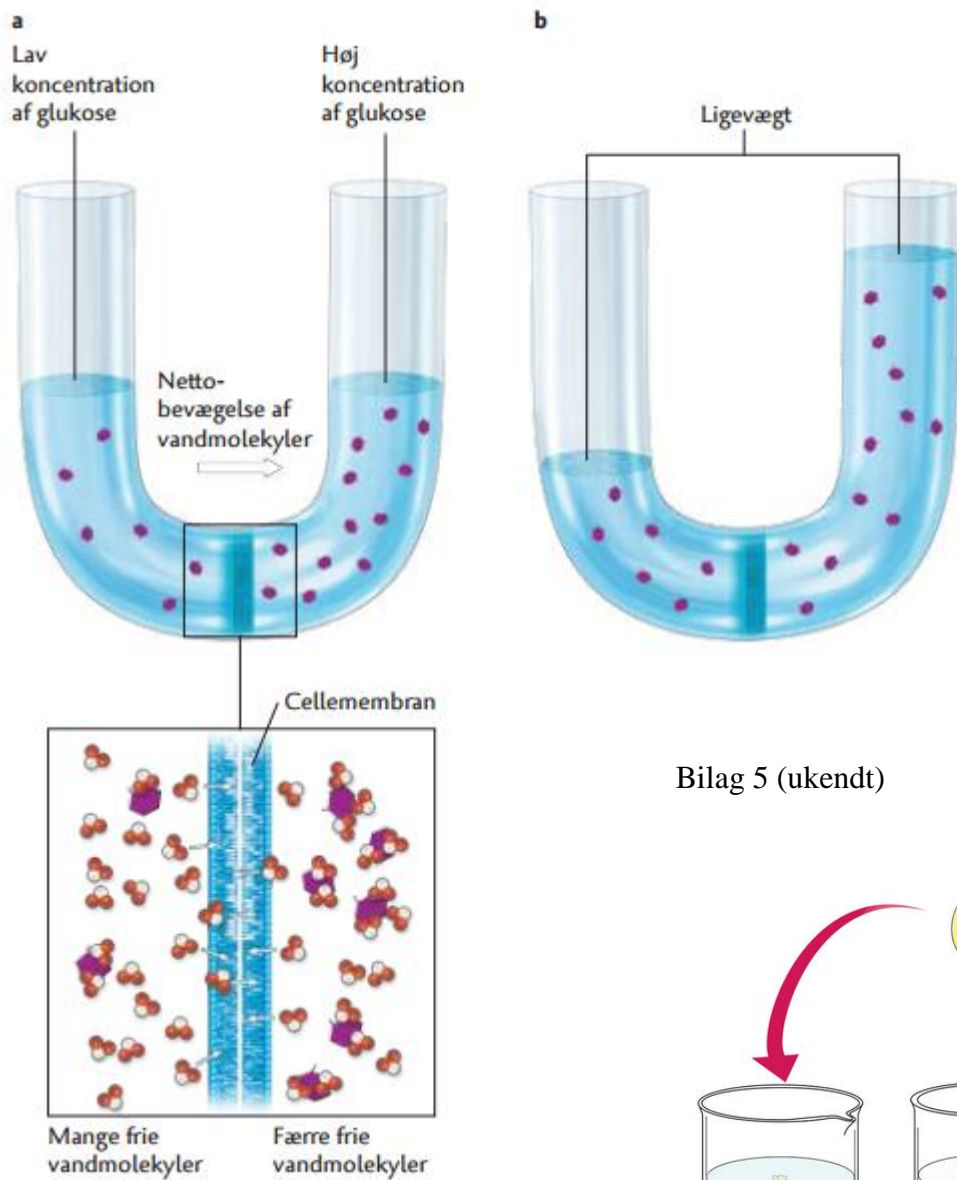
Osmose



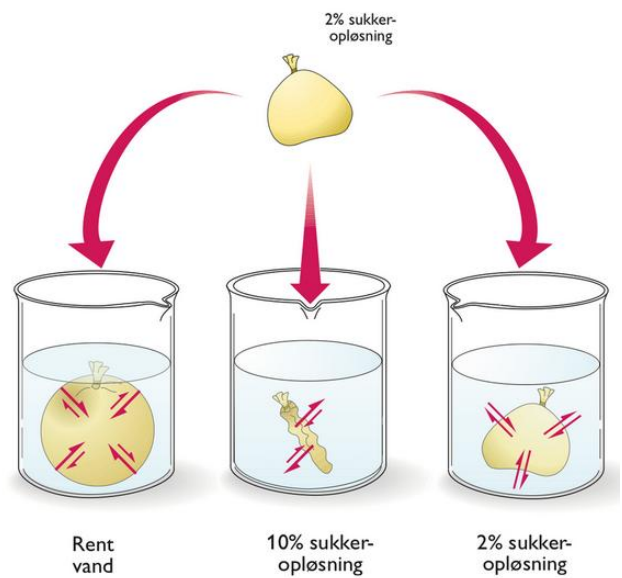
Aktiv transport af ioner



Bilag 4 (kendt)



Bilag 5 (ukendt)



Bilag 6 (kendt)

